



## LABORATORY MIXER MODEL LB775A



Shown with optional mix pot.

The single shaft laboratory mixer is typically used for low viscosity materials such as **paint, ink, coatings, light adhesives, oils, chemicals and dyes**. The right choice of blades and speed will generate a homogenous mix when mixing liquid and dry ingredients. Various blades are available for use on the LB775 applicable to many applications.

### BENCH-TOP LAB MIXER ALL-IN-ONE AIR/OIL LIFT

THIS UNIQUE COMPACT HIGH-SPEED LABORATORY DISPERSER IS PROVIDED WITH A VARIABLE FREQUENCY INVERTER DRIVE.

- SPEED RANGE UP TO 5600FPM DEPENDING ON TANK AND BLADE GEOMETRY.
- ADJUSTABLE TANK HOLDER FOR USE WITH 1 TO 5 GALLON POTS.
- MANUAL LEVER CONTROL FOR HEIGHT ADJUSTMENT
- AVAILABLE WITH 2 OR 3HP
- 3 OR 4 INCH IMPELLERS.



Shown with disperser blade. Other blade designs are available.

# MYERS LABORATORY MIXERS

USED IN DOZENS OF APPLICATIONS BOTH LOW AND HIGH VISCOSITY



Dual Shaft with special heat shroud.

**ALL MYERS MIXERS ARE AVAILABLE IN LABORATORY SIZE MODELS:**

- ▶ SINGLE SHAFT, DUAL AND TRI-SHAFT
- ▶ VACUUM AND NON-VACUUM
- ▶ JACKETED OR NON-JACKETED

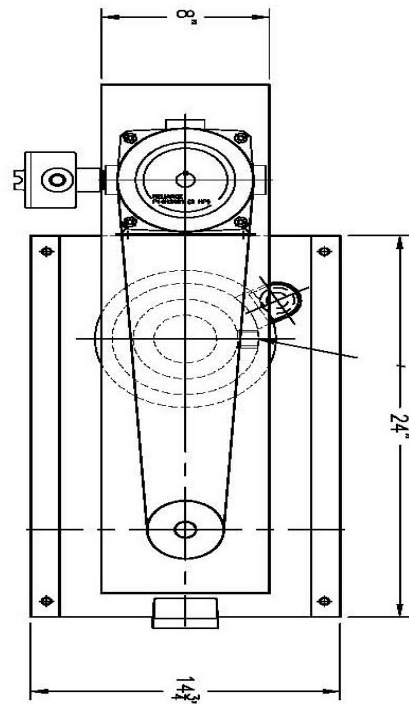
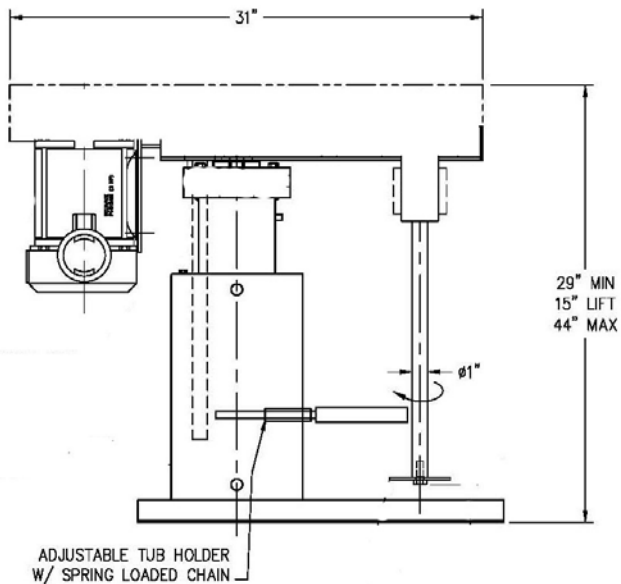
LABORATORY SIZED UNITS ARE SUITABLE FOR SMALL BATCH PRODUCTION, PILOT PLANT AND RESEARCH USE.

**CHOOSE MYERS FOR YOUR SCALE-UP PROCESS.**

TYPICAL LAB SIZES RANGE FROM 1 TO 9 GALLONS. MOST UNITS ARE INVERTER-DUTY WITH EXPLOSION PROOF MOTORS.



Tri-Shaft Vacuum



**SAMPLE DRAWING 2HP LB775A**  
DIMENSIONS WILL VARY DEPENDING ON HORSEPOWER



8376 SALT LAKE AVE. BELL, CA. 90201 \* PHONE 323 560 4723 \* FAX 323 771 7789  
WEB SITE: [WWW.MYERSMIXER.COM](http://WWW.MYERSMIXER.COM) EMAIL: SALES@MYERSMIXER.COM