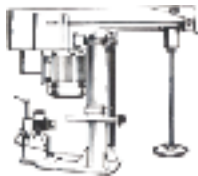


MYERS ANSWERS EVERY MIXING or DISPERSING NEED



Regular Dispersing

Single shaft economy 775 series, 5 through 25 HP. Thousands in use throughout the world.

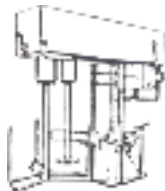


Single shaft heavy duty 800 series, 15 through 200 HP. Thousands in use around the world.



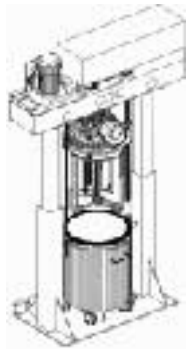
Extra Fine Dispersing

Twin shafts, 850 series, with 4 over-lapping blades disperses so that often secondary sand milling is often not needed. Shafts spread for easy loading. Extra fast action. One or two motors, total 15 to 200 HP, variable speed - higher with 2 speed motors and variable frequency drives.



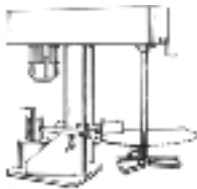
High Viscosity Dispersing

Two separate shafts, famous 550 series. One or two motors. Slow speed sweep impeller starts product moving and forces it into high speed dispersing blade. Developed by Myers. Thousands in use around the world.



Heavy Mixing

Tri-shaft mixer provides greater intermixing and some dispersion. 550/500 series. Use a Myers Ram Press to discharge high viscosity products

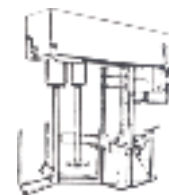
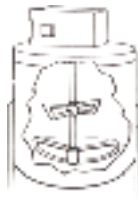


Single shaft slow speed blade combines material without dispersion. Model 500 series.



Light Mixing or Let Down

Detachable shaft hydraulic driven battery handles a great variety of colors quickly. 200 series. (above)
Tank mounted agitators mix or let down in a great variety of configurations. 600 series. (below)



Lift or Tank Mounts

All of these mixers/dispersers (except detachable shafts) are available in either hoist (right) or tank (below) mounted models.

Hoist mounts usually are preferred where you:
(1) have changes in batch consistency or color.
(2) want to operate the machine in up to four different tanks.

Normally, tank mounted mixers or dispersers are used for high volume production of the same type of batch over and over again.



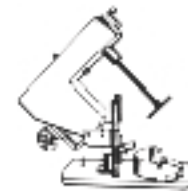
Limited Lift

Formerly impellers always operated in a fixed position, but now Myers offers tank mounts with limited (usually 24") vertical movement of the impeller.



Laboratory Units

Practically all Myers mixers or dispersers are available in laboratory size units (usually 2 to 5 gallon sizes). You can test a new product on one of these in the Myers lab or in your own plant - then scale up to a production size model.



8376 Salt Lake Ave Bell, CA, 90201-5816 USA
(323) 560-4723 FAX: (323) 771-7789
sales@myersmixer.com www.myersmixer.com