



MYERS Engineering, Inc.

*The first name in mixers and dispersers.
www.myersmixers.com*

775 / 800 SERIES SINGLE SHAFT DISPERSERS THOUSANDS IN USE AROUND THE WORLD.



Frequency Inverter Drive 800 Series disperser is shown with our standard pipe style shaft guard.

Frequency inverter drive units are designed with a variable speed belt and drive system using high efficiency, constant torque motors coupled to a solid state variable frequency inverter. This provides for a soft start of the machine with precise speed control at significant energy savings.

The **775 and 800 series dispersers** are compact and designed to reduce down time in demanding environments. All lubrication points are externally accessible to simplify the maintenance process encouraging on time preventative schedules. Maximum performance capacity with minimum height above the floor reduces the possibilities of shaft vibration. More dispersion operation is achieved in less space, in less time with more profit.

Hoist and Tank Mounted Styles

- Batch sizes from portable tanks to up to 7500 gallons for let down and large batches
- 775 Series
Varies up to up to 15,000cPs
5 to 25 horsepower
- 800 Series
Varies up to 30,000cPs
30HP to 300HP
- Delivers full HP at the mixing shaft
- 360 degree rotation available
- Air-over-oil hydraulic lift



***Model 600/800 Tank Mount
Control panel is shown mounted close to the mixing machine. The drive is mounted away in a safe environment.***

TYPICAL SIZING PARAMETERS COMMONLY USED IN PAINT AND SIMILAR APPLICATIONS

BLADE DIAMETER SHOULD EQUAL 1/3 THE TANK DIAMETER.

BLADE DISTANCE FROM THE TANK BOTTOM IDEALLY SHOULD BE 1/2 TO 1 BLADE DIAMETER.

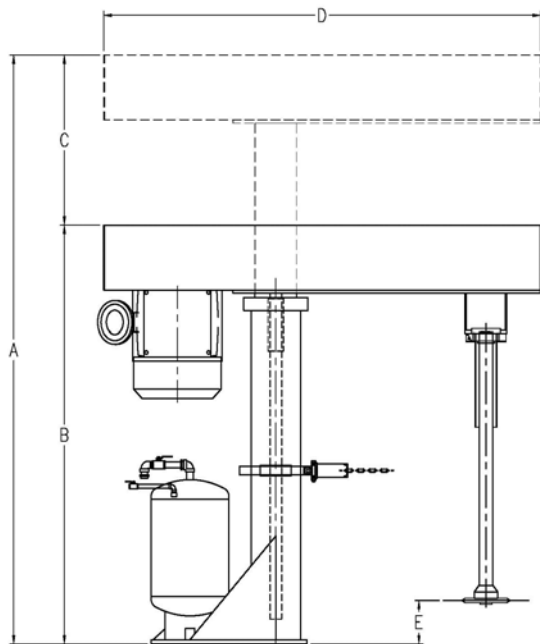
MINIMUM BLADE DEPTH EQUALS 1 1/2 BLADE DIAMETER.

DISPERSING APPLICATIONS TYPICALLY REQUIRE 1 HORSE POWER FOR EVERY 10 GALLONS.

OPTIMUM PERIPHERAL SPEED IS 5200 FPM



MYERS MANUFACTURED TANK



Model 775 (5 to 25HP)

MODEL 800 (30 TO 300HP)

ALL DIMENSIONS ARE ESTIMATES AND SHOULD NOT BE USED AS ACTUAL MANUFACTURED FINAL SIZING.

DIMENSION TABLE FOR SERIES 775 (STANDARD IN INCHES)

HP	A	B	C	D	E
5	83	53	30	37	4
7.5	99	61	38	54	4
10	122	74	48	87.5	9
15	122	74	48	87.5	9
20	122	74	48	87.5	9
25	122	74	48	87.5	9
		(Metric)			
HP	A	B	C	D	E
5					9
7.5	2527	1613	914	1362	9
10	3099	1880	1219	2413	229
15	3099	1880	1219	2413	229
20	3099	1880	1219	2413	229
25	3099	1880	1219	2413	229

DIMENSION TABLE FOR SERIES 800 (STANDARD IN INCHES)

HP	A	B	C	D	E
30	122	74	48	87.5	9
40	143	89.50	54	89	9
50	143	89.50	54	94	9
60	143	89.50	54	94	9
75	156	96	60	116	9
100	187.75	115.75	72.	125	12
		(Metric)			
HP	A	B	C	D	E
30	3099	1880	1219	2413	229
40	3546	2273	1372	2692	229
50	3546	2273	1372	2692	229
60	3546	2273	1372	2845	229
75	3962	2438	1524	2946	229
100	4769	2940	1829	3175	305



8376 SALT LAKE AVE. BELL, CA. 90201

* PHONE 323 560 4723

* FAX 323 771 7789

WEB SITE: WWW.MYERSMIXER.COM

EMAIL: SALES@MYERSMIXER.COM